
BELLS & SPELLS

Provisional Technical Rider

STARRING AURELIA THIERREE
DIRECTED BY VICTORIA THIERREE CHAPLIN

PLEASE NOTE

This technical rider is subject to change as the production evolves. Please confirm all details with Production Manager. If there are any problems to fulfill our requirements, please let us know as soon as possible, so we can work out a proper solution together.
For further information and questions regarding this technical rider please do not hesitate to contact us.

General information

Bells & Spells is a visional theatric performance, which includes elements of dance, visional circus and magic tricks performed by two actors.
Running time 1h10, no intermission.

As the show is heavily based on illusions and tricks and in order to have these effects to work, we have to be able to achieve a full blackout on stage and in the auditorium for both rehearsals and shows.
That involves dimming exit signage using dark blue lighting gels with your consent, if necessary.

All positions over-stage will be determined from our main artist on our load-in day on-site. This includes lights, rigging and masking.

The company equipment is transported in a trailer 75m³. Please let us know in advance if there are any issues regarding access or parking.

Sound and light desk should be placed in the rear area of the auditorium, next to each other. Free view to the stage is necessary.

ARTISTIC AND TECHNICAL CAST

01 ACTRESS
01 DANCER / ACTOR
03 STAGE TECHNICIANS
01 SOUND OPERATOR
01 LIGHTING OPERATOR
01 ARTISTIC DIRECTOR (tbc)
01 TOUR-MANGER / ADMINISTRATION
TOTAL: 9

GENERAL SCHEDULE AND STAFFING NEEDS

A detailed schedule for Load-In, technical rehearsals, performances, and Load-Out with specific personnel requirements will be prepared on a per-venue basis.

TECH AND REHEARSAL SCHEDULE

Schedule Preferred calls are:

Day 1 (Load-in) 9am – 1pm / 2pm – 6pm / 7pm – midnight (mainly focus)

Day 2 (Show Day) 9am – 1pm / 2pm – 6pm / 7pm – post show

Additional shows: 11am - 1:30pm PRE-SET / 2 hours before house opening show call

With staggered lunch and dinner breaks across departments, if possible. Please notify us of local venue practices.

LOAD-IN / SET-UP CREW

- ☐ (4) LX-electricians (lighting technicians)
- ☐ (4) Carpenters / stage technicians
- ☐ (1) Wardrobe / Costume Assistants
- ☐ (1) Rigger / Fly rail operator, if necessary
- ☐ (1) Stage-Manager
- ☐ (1) Master electrician
- ☐ (1) audio engineer
- ☐ (4) people for load-out truck (can be the same as stage-techs.)

REHEARSAL / PERFORMANCE CREW

- ☐ (1) LX-electrician
- ☐ (1) Audio Engineer
- ☐ (2) Stage-technician / Running Crew Person (props / costumes)
- ☐ (1) Stage-Manager
- ☐ (1) Wardrobe / Costume Assistants (post show)

LOAD-OUT / STRIKE CREW

- ☐ (4) Stage-technician / Carpenters
- ☐ (2) LX-electrician
- ☐ (1) Audio Technician
- ☐ (1) Wardrobe / Costume Assistants
- ☐ (4) people for loading truck (can be the same as stage-techs.)

STAGE

General description

To specify our scenic design, which mainly consists out of 5 rolling panels (h2,60m / w1,80m), two in each are connected to a 90° angle.

Regarding the soft-goods, we are running the show in a "Black Box" with 4 wings (5 pairs of legs) and 4 borders.

The back-drop and the Marley are part of our set.

The stage floor will be covered with our own dance carpet (Marley). Thanks for removing your "Marley" before our arrival, if need be.

Stage requieremts (minimum)

- Proscenium opening 9m
- Proscenium height 6m
- Depth from safety curtain to upstage wall 10m
- Grid height 12m (to be discussed)
- Width (wall to wall) 16m

VENUE TO PROVIDE:

Soft goods:

- Main curtain
- 5 sets of black velvet legs
- 4 black velvet borders.
- Full black curtain (second back-drop)

Back-stage:

- 4 prop tables
- 2 costumes racks
- 4 blue pin spots
- 200 m PVC-Dancefloor Tape / black for the load-in + 50m per performance

Special effect:

A "LOOK TINY S" fog machine, provided by the company, is used during the show for approximately 10 seconds behind the polichinelle.

Thanks for getting a permission from the competent authority, if need be.

RIGGING

Company will provide following systems that need to be attached in the air.

A. ROLLING PICTURE / POLICHINELLE – MIDDLE AGE

- Size 4,25m x 3,00m (width x height)
- The entire system is attached to a line-set, which is in a fixed position.
- The polichinelle is operated by our own rope system.
- Static weight approx. 20kg

B. CEILING FAN

- A ceiling fan is attached to a line-set, which is in a fixed position.
- The ceiling fan is operated by our own rope system.
- Static weight approx. 6kg

C. ROLL-DOWN CURTAIN – FLOATING WOMAN

- A roll-down curtain system (1,80m width) is attached to a line-set, which is in a fixed position.
- To roll off the light fabric our own system is used, at the end the fabric falls.
- Static weight approx. 15kg with fabric (approx. 2kg)

D. LAUNDRY

- Two vertical pipes (length 2,80m) located SL and SR, combined with two ropes, ø 5mm, will create two laundry lines in different heights on which 8 bed sheets are located. The sheets are pulled down by the artists one after the other.
- This system is attached to a line-set, and will be operated by a technician during the show. (FLY-CUE)
- Static weight approx. 40kg with sheets (approx. 8,5kg)

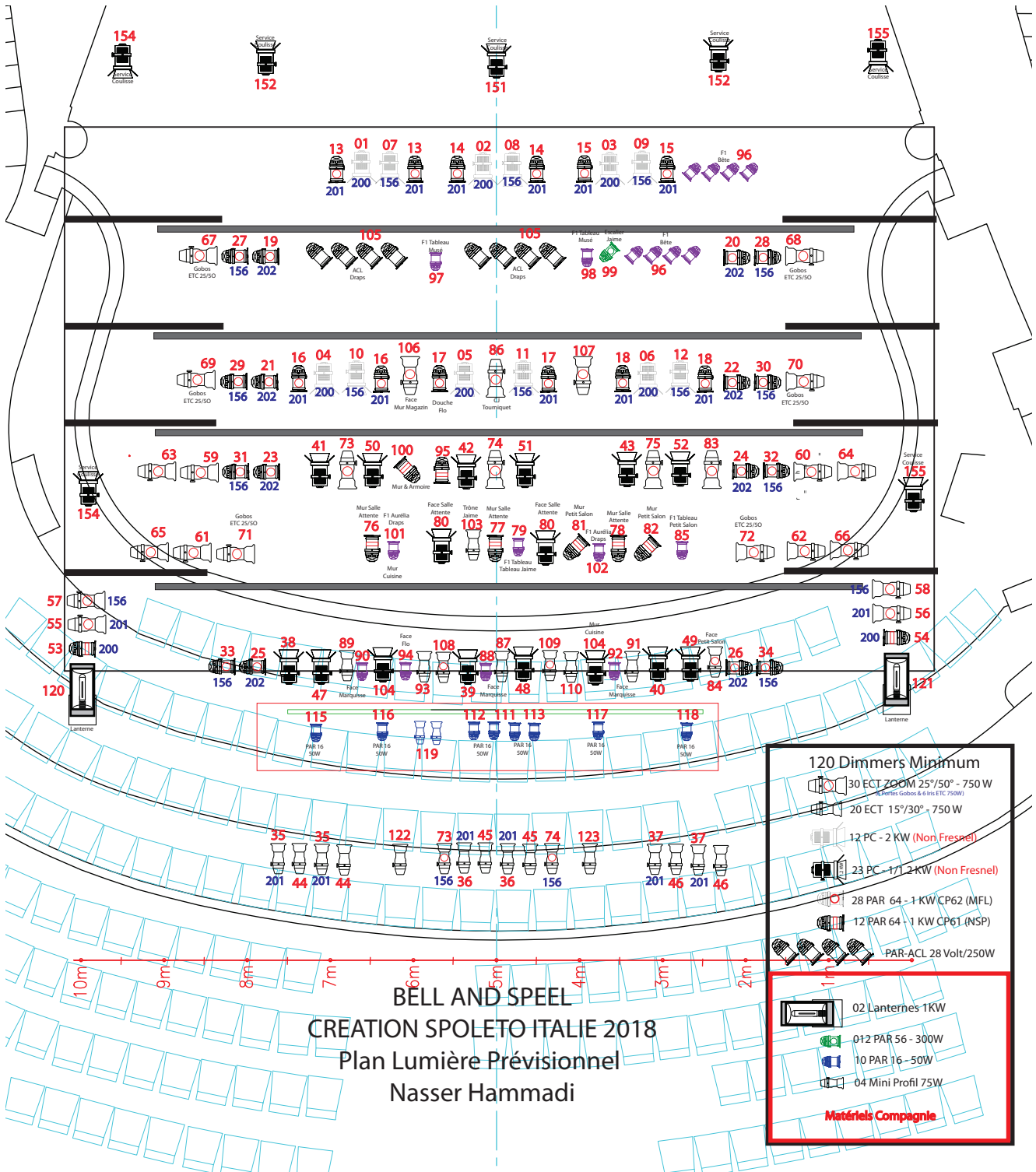
In case we can not work with a fly-cue, e.g. missing height, company can provide another solution, so that the sheets can be pulled in from stage left.

Please note:

4 metal stands need to be fixed to the deck to attach our operating lines. If it is not possible to screw in your stage floor, please provide 20 stage weights of 12kg.

LIGHTING DESIGN

Company will provide specific lighting information and light plot adapted to the circumstances of each venue.



Sound Requirements for the show «Bells and spells»

[Christian leemans@yahoo.fr](mailto:Christian_leemans@yahoo.fr) or dombouffard@me.com

Sound system:

- Please provide a professional quality stereo sound system covering all the audience areas linearly 20Hz-20kHz. (Sub, Infills, outfills, delays, ...) with the corresponding amps and processing.
- The sound system must be capable of delivering 100dB without distortion.
- Control of the processing must be possible at any moment.
- A central cluster would be appreciated if possible.

Mixing desk:

The mixing desk will be provided by the production. We advise you if something different should happen.

Please provide:

- 1 m free space to install our material. Not in a closed control room or area without direct PA coverage.
- 2x 230V 50Hz grounded european connector power supply.
- All the cables to pick the output feeds (xlr) at the desk to the PA and monitors

Monitors :

- 6x 2 way monitors 12 inch woofer minimum (2 on the floor , 4 monitors to fly, 4m from the stage)
- 4 x Amp channel corresponding to the monitors

Output patch :

Output	Label	Remarks
xlr 1	Main L	
xlr2	Main R	
xlr3	Main Mono	
xlr4	SUBs	
xlr5	Monitor SR front	1 speaker on the ground
xlr6	Monitor SL front	1 speaker on the ground
xlr7	Sidefills	2 speaker flyed 4 meters from the stage facing stage center
xlr8	Monitor Back	2 speaker flyed 4 meters from the stage centered behind the backdrop facing the audience

The exact positioning of the monitors will be decided during the set up.

Provide a good rigging system for the 4 monitors to fly (control of the angles of the speaker, horizontal and vertical)

Intercom :

- Please provide a good quality intercom system ,
- 2 wireless beltack and 4 Wired (Light - Sound - Stage Left – Stage Right)

Others :

Provide 1 xlr line between the front stage and the desk for a microphone

1 tall microphone stand at the desk

WARDROBE

VENUE to provide:

- Laundry and dry cleaning services for all costumes. Laundry facilities must include washer, dryer, ironing equipment and a steamer.
- (1) Wardrobe person should be on site at the time of Load-In to unpack, steam, prepare all garments and be prepared for minor repairs or re-fittings.
- (1) Wardrobe person must be available after each rehearsal and performance to help cleaning and refreshing costumes.
- Costumes must be prepared and available for the pre-set at 11:00am the next day
- Wardrobe person will be asked to clean and pack costumes and costume-related props during load-out.

PLEASE NOTE: Costumes are fragile. Speak to Production Manager or Costume Designer before dry-cleaning any garments.

DRESSING ROOMS

- (5) dressing rooms equipped with chairs, tables, mirrors, lights, shower, toilet and fresh towels

Dressing Room breakdown is as follows:

- ☐ (2) soloist dressing
- ☐ (1) technicians
- ☐ (1) costume shop
- ☐ (1) production office

HOSPITALITY

- Please provide bottled drinking water, juice, coca cola (zero and normal), fresh milk, coffee, a selection of teas (both herbal and caffeinated), fresh fruit, and a selection of snacks (nuts/cookies) in sufficient quantities to provide for both Company technicians and artists, for the entire duration of the engagement, replenished daily, available starting the first day of Load-In.
- 20 small bottles of water per each performance.

CONTACTS

Technical coordination and Stage-Manager:

Gerd Walter

Tél. : +49 171 7802316

provo-patrouille@web.de

lighting :

Nasser Hammadi

hammadi.a.n@hotmail.fr

Sound operator :

Christian Leemans

Christian_leemans@yahoo.fr

or

Dom Bouffard

dombouffard@me.com

Costumes :

Monika Schwarzl

mo.schwarzl@gmail.com

Administrator :

Didier Bendel

didierbendel@gmx.de

+49 151 22 36 94 05